

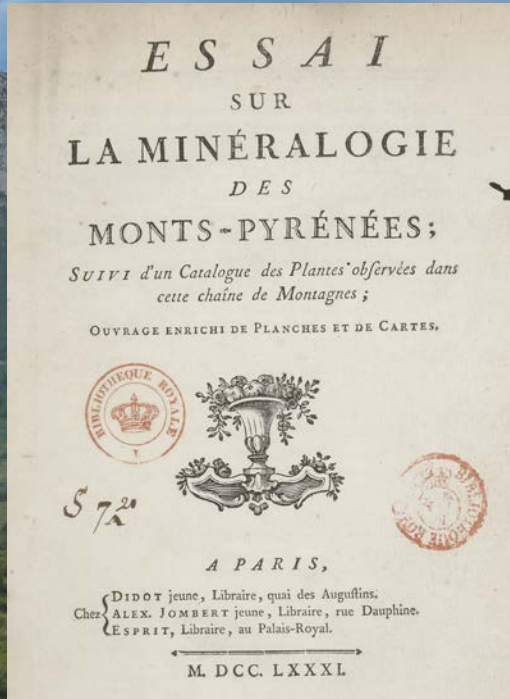
La datation U-Pb sur calcite : un outil de découverte en géodynamique

Et s'il existait une phase de raccourcissement « tardi - pyrénéenne » à la transition Burdigalien - Langhien ... ?

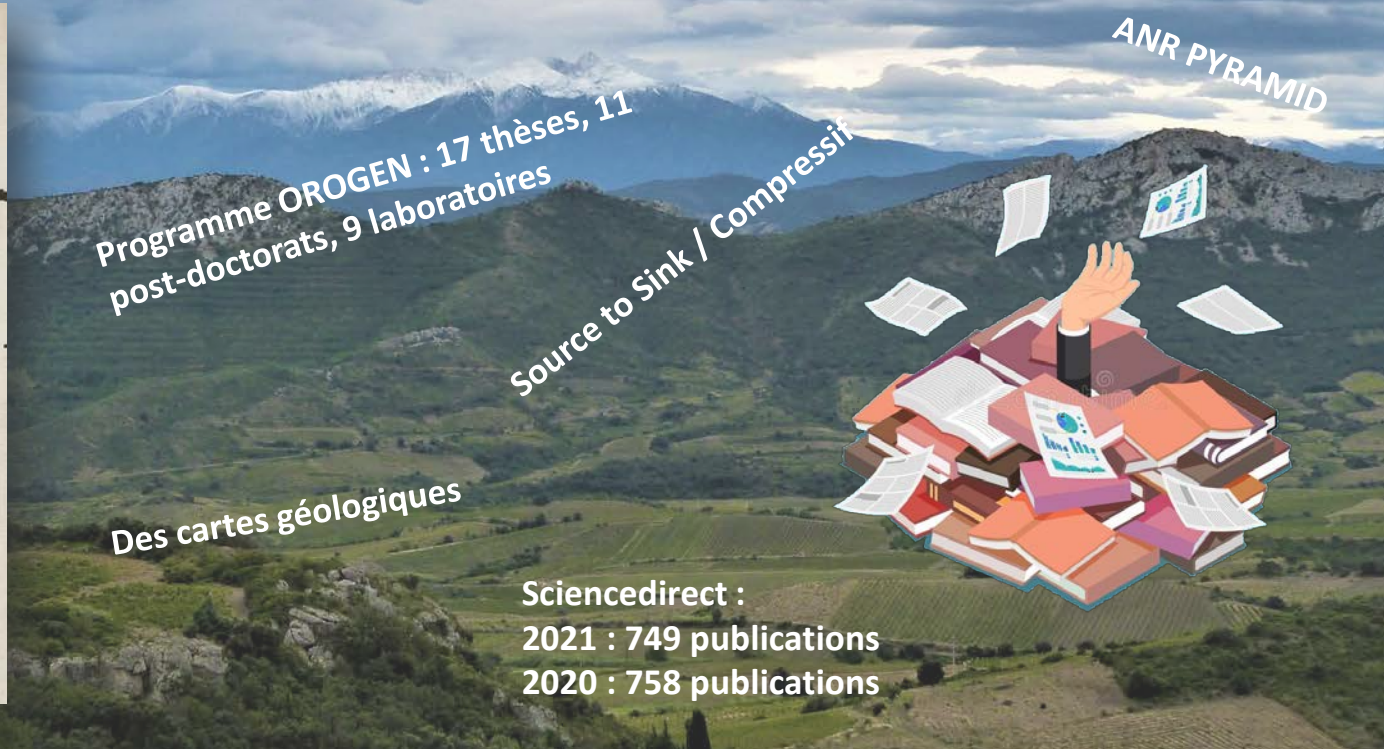
Yves Missenard, Oriane Parizot, Frederic Haurine, Thomas Blaise, Jocelyn Barbarand, Antonio Benedicto, Philippe Sarda

Yves.Missenard@universite-paris-saclay.fr

Et s'il existait une phase de raccourcissement « tardi - pyrénéenne » à la transition Burdigalien - Langhien ... ?



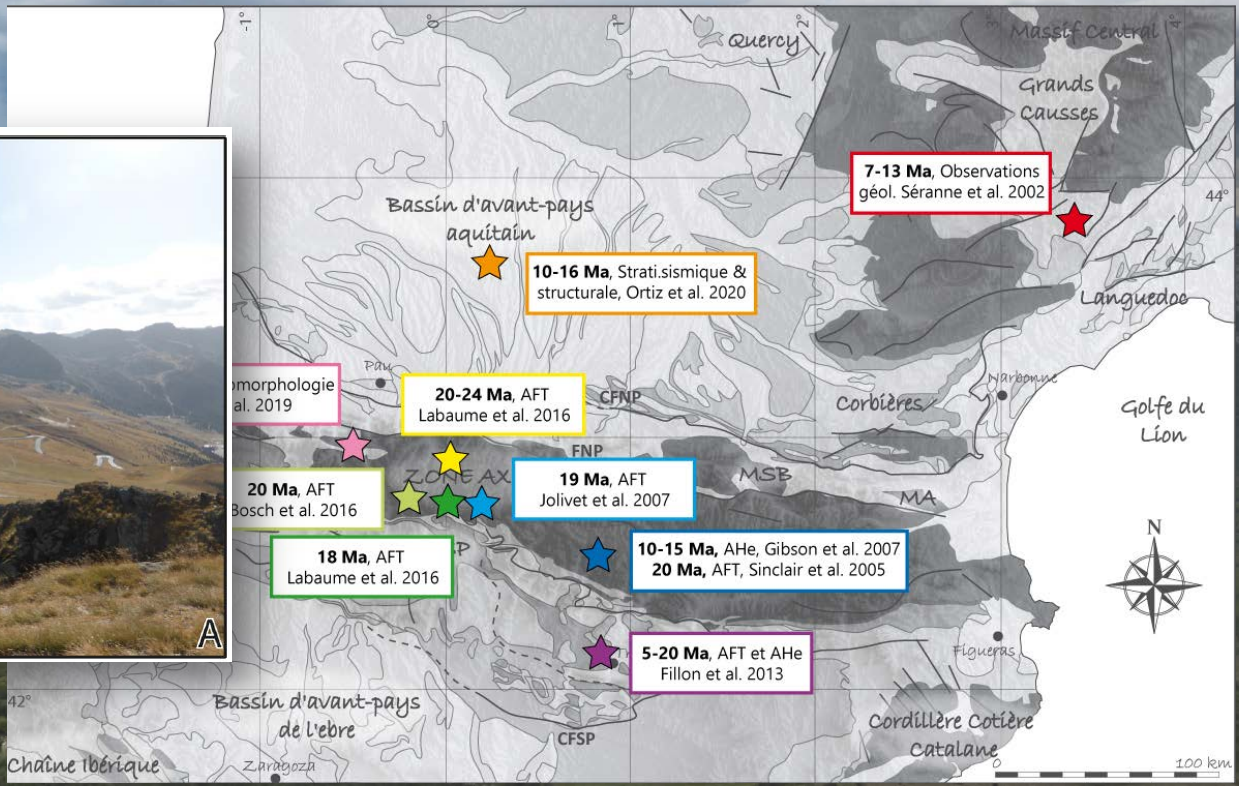
Palassou, 1781



Et s'il existait une phase de raccourcissement « tardi - pyrénéenne » à la transition Burdigalien - Langhien ... ?



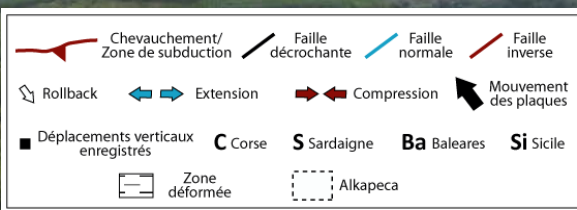
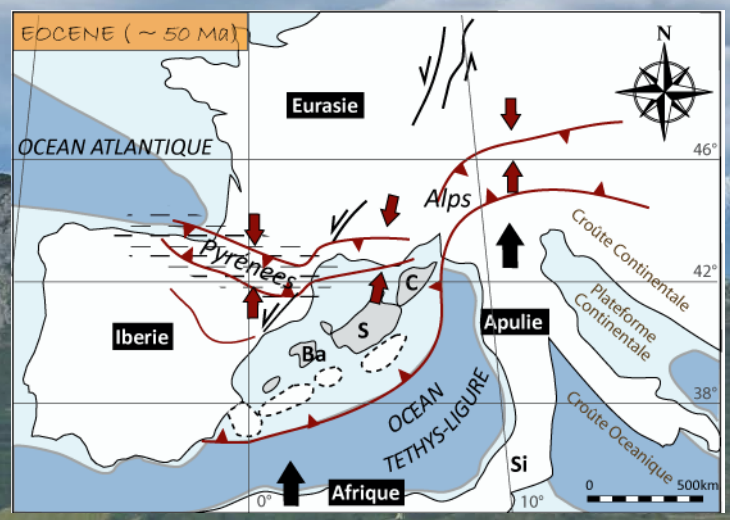
Bosch et al., 2016



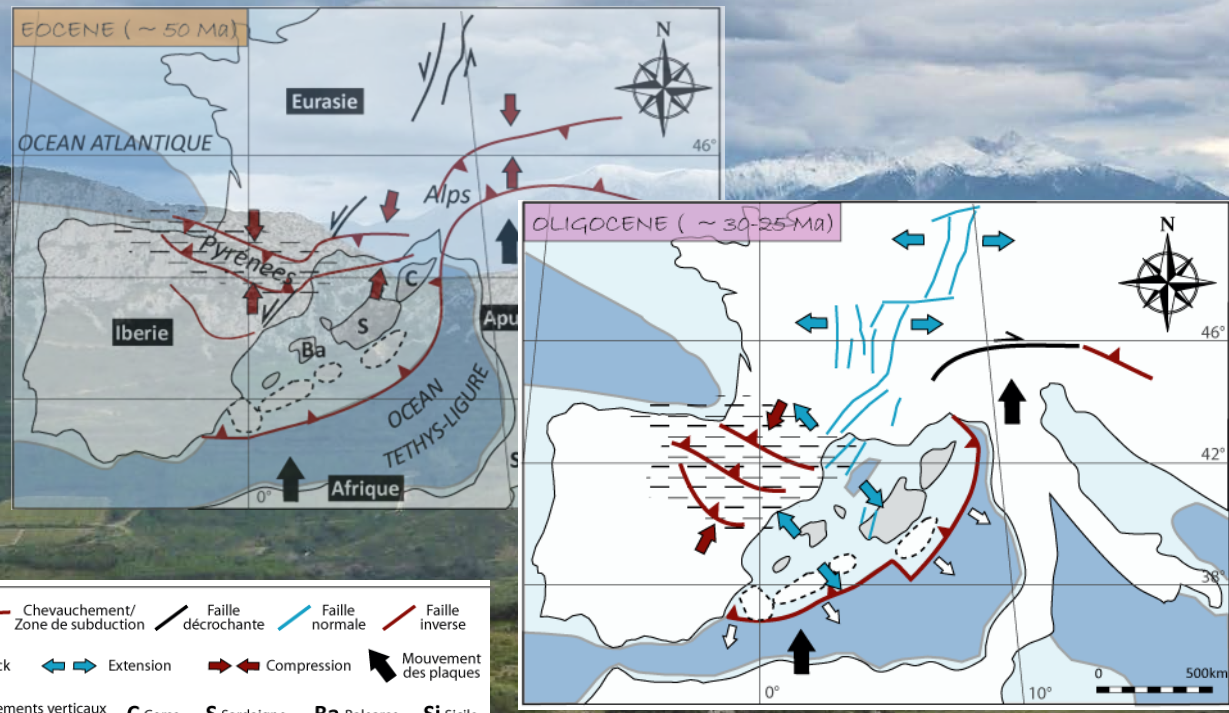
Et s'il existait une phase de raccourcissement
« tardi - pyrénéenne »
à la **transition Burdigalien - Langhien ... ?**



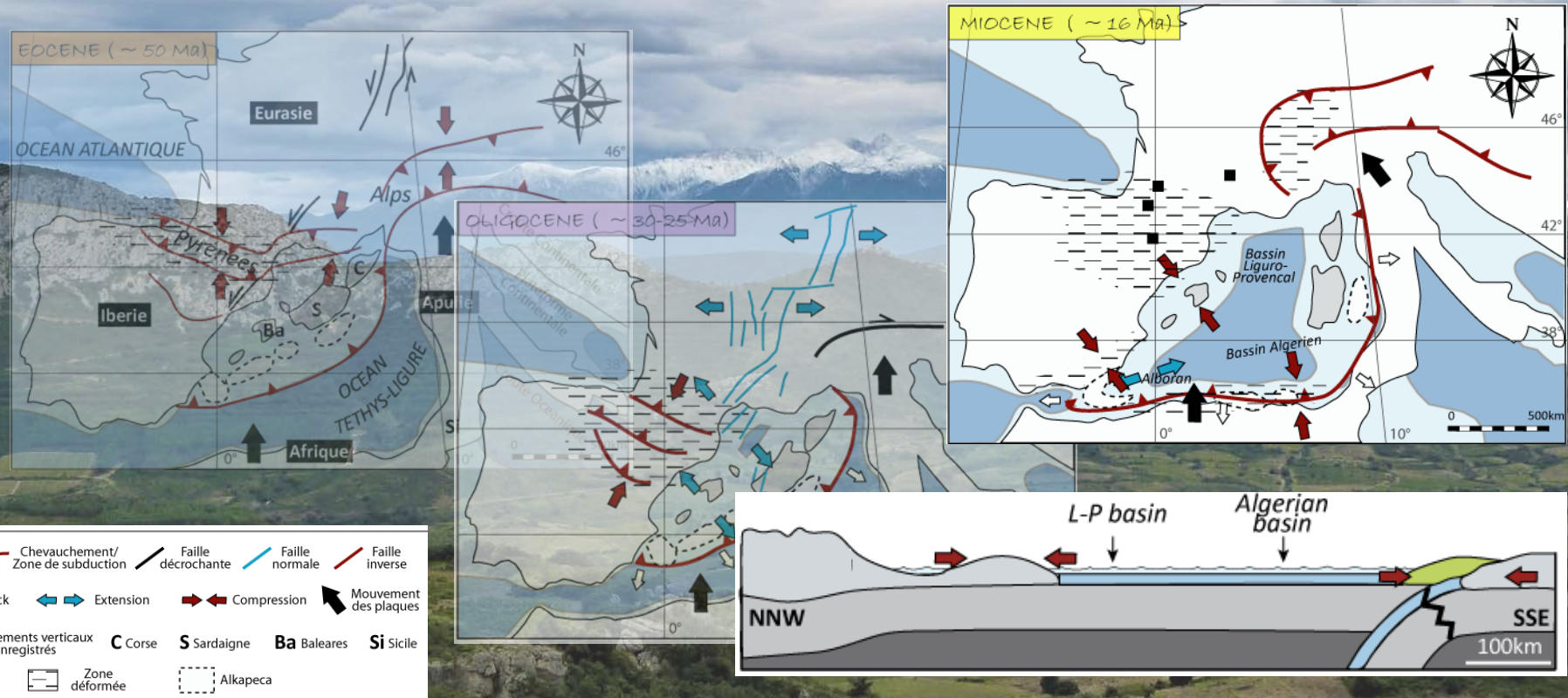
Et s'il existait une phase de raccourcissement « tardi - pyrénéenne » à la transition Burdigalien - Langhien ... ?



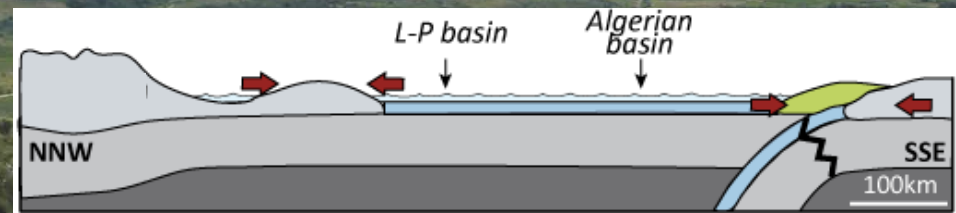
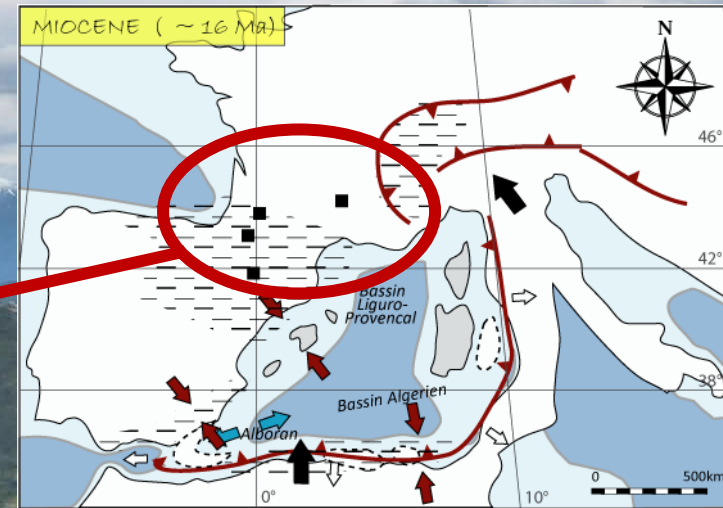
Et s'il existait une phase de raccourcissement « tardi - pyrénéenne » à la **transition Burdigalien - Langhien** ... ?



Et s'il existait une phase de raccourcissement « tardi - pyrénéenne » à la **transition Burdigalien - Langhien** ... ?



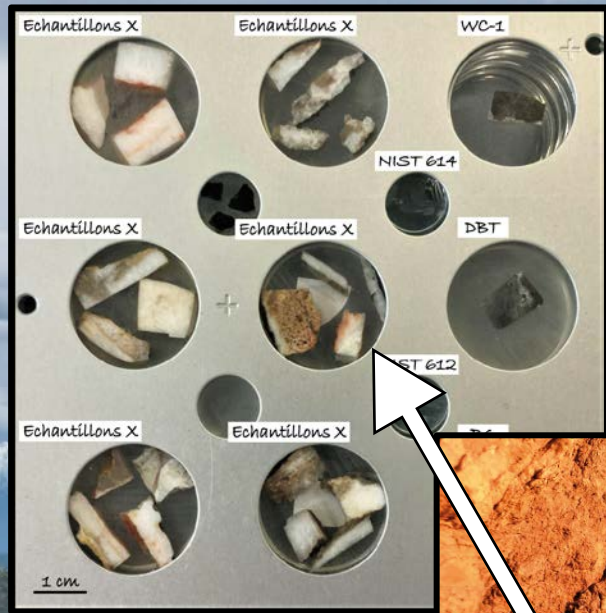
Et s'il existait une phase de raccourcissement
« tardi - pyrénéenne »
à la **transition Burdigalien - Langhien ... ?**



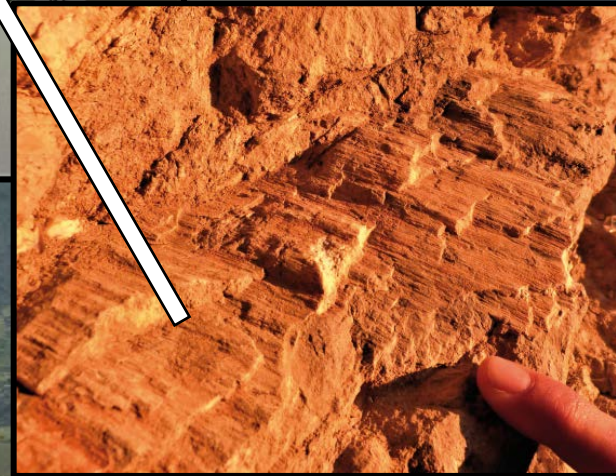


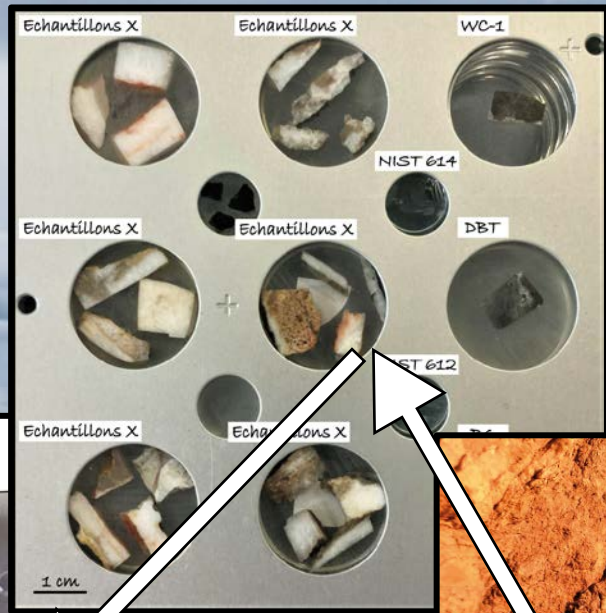
La datation U-Pb sur calcite de faille



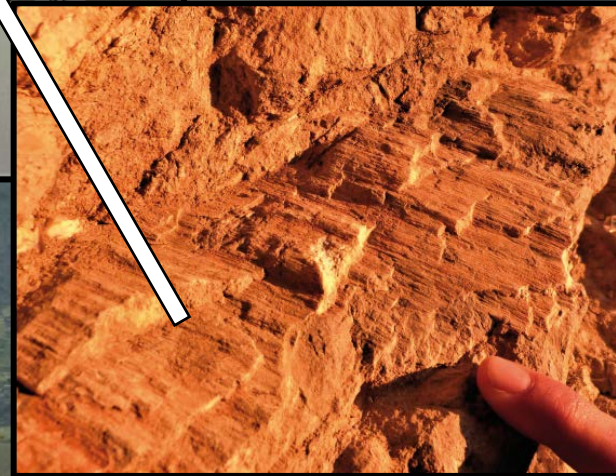
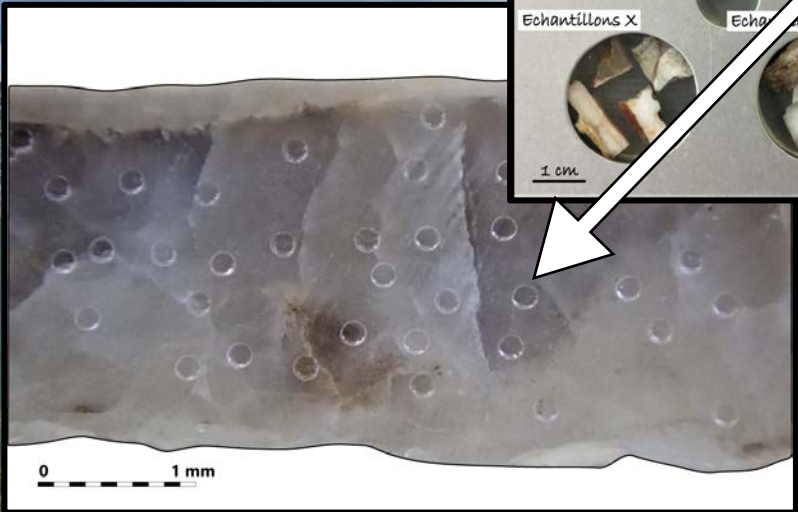


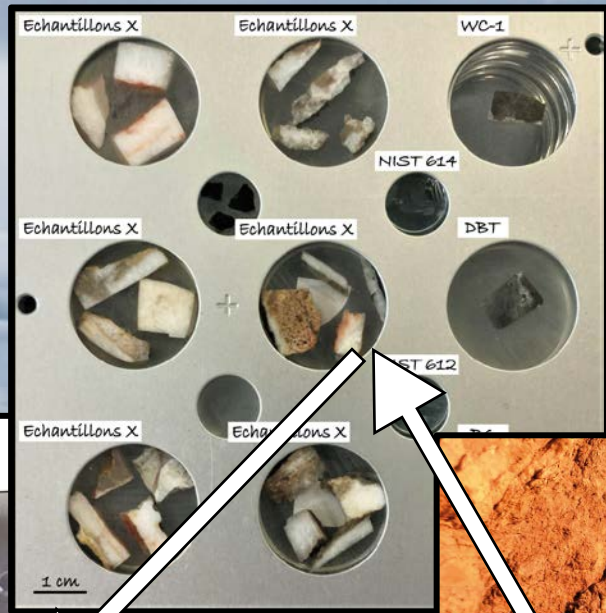
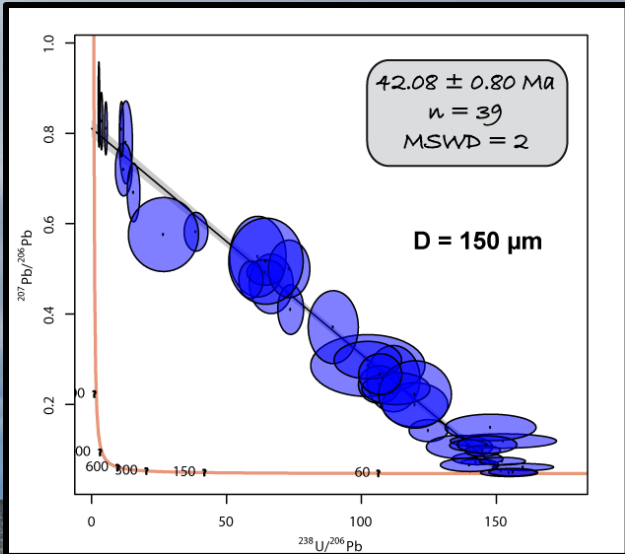
La datation U-Pb sur calcite de faille



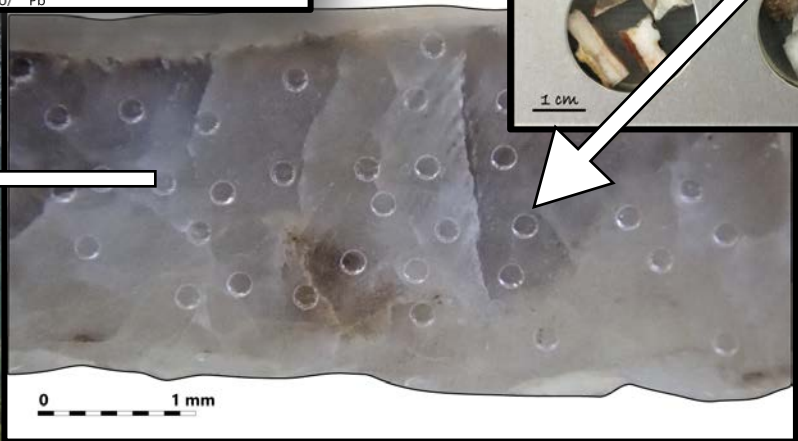


La datation U-Pb sur calcite de faille

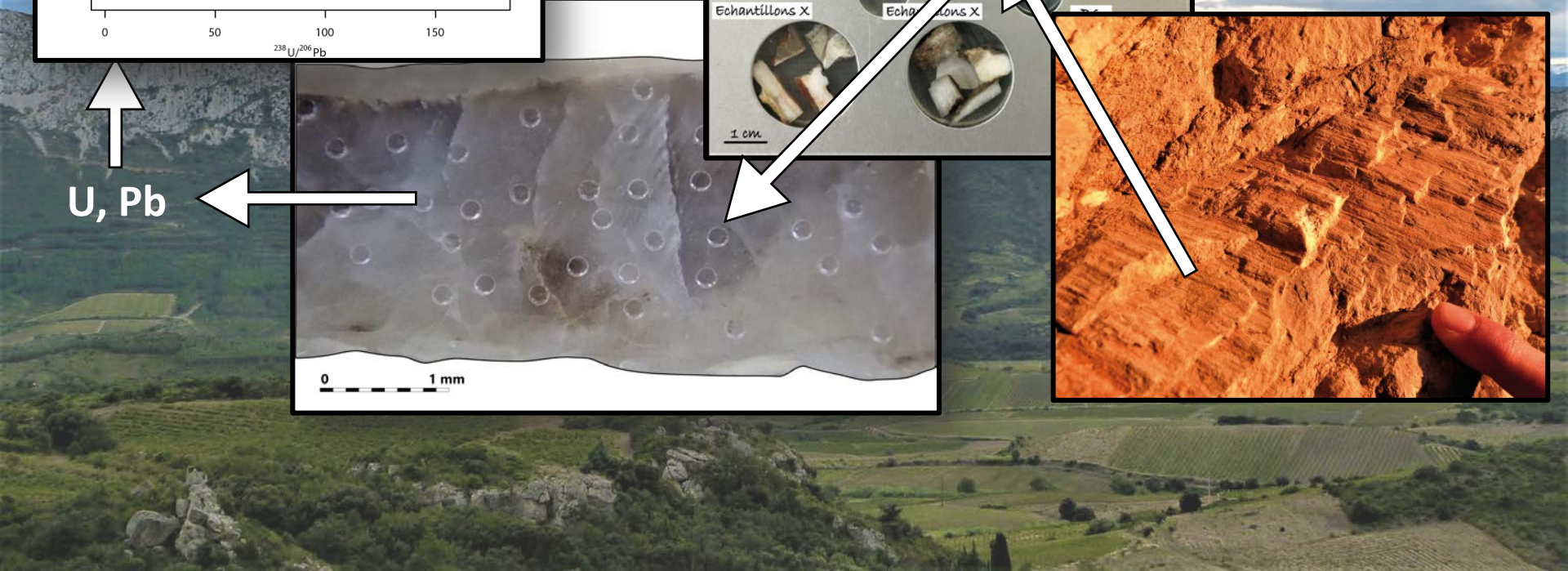


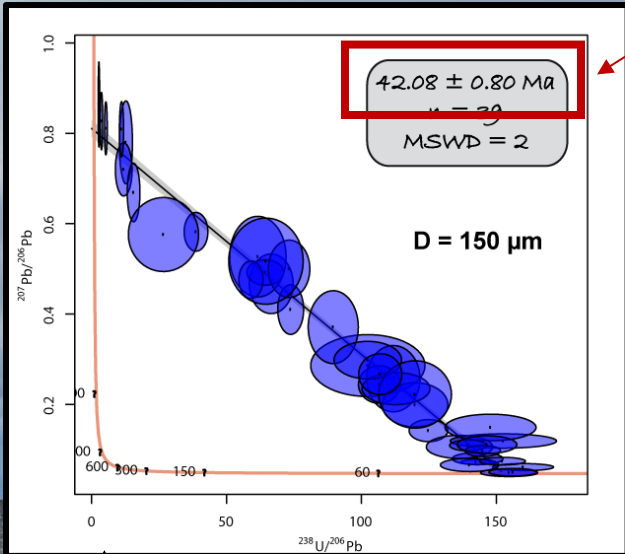


La datation U-Pb sur calcite de faille

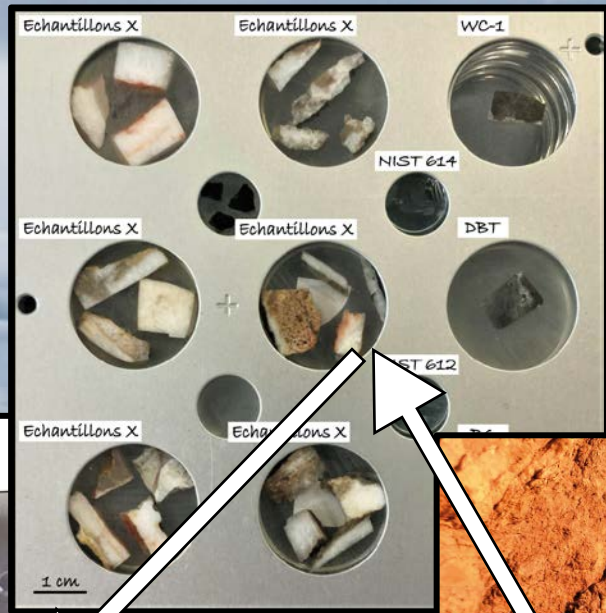


U, Pb

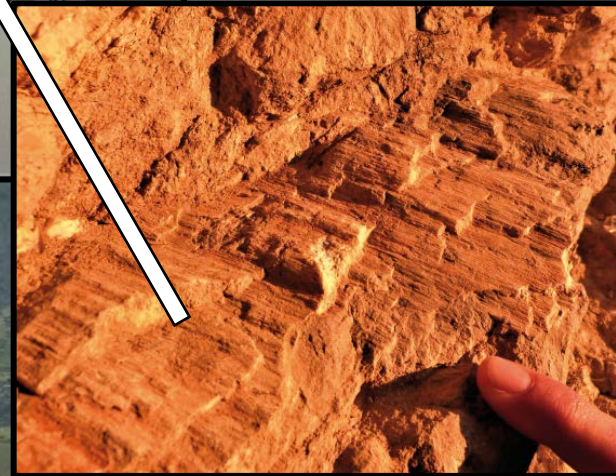
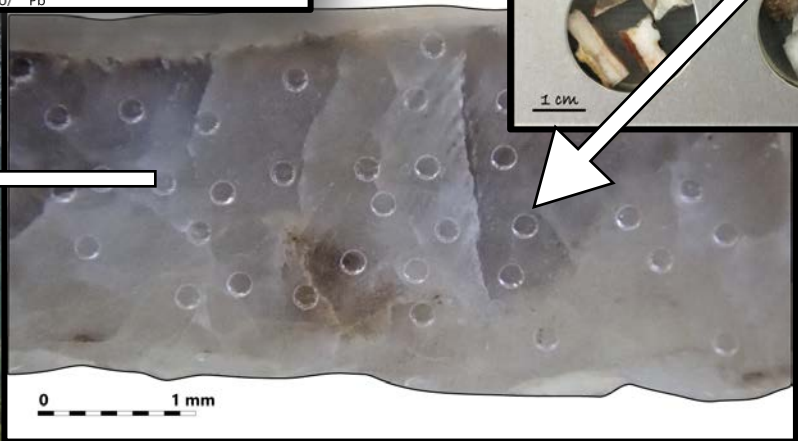




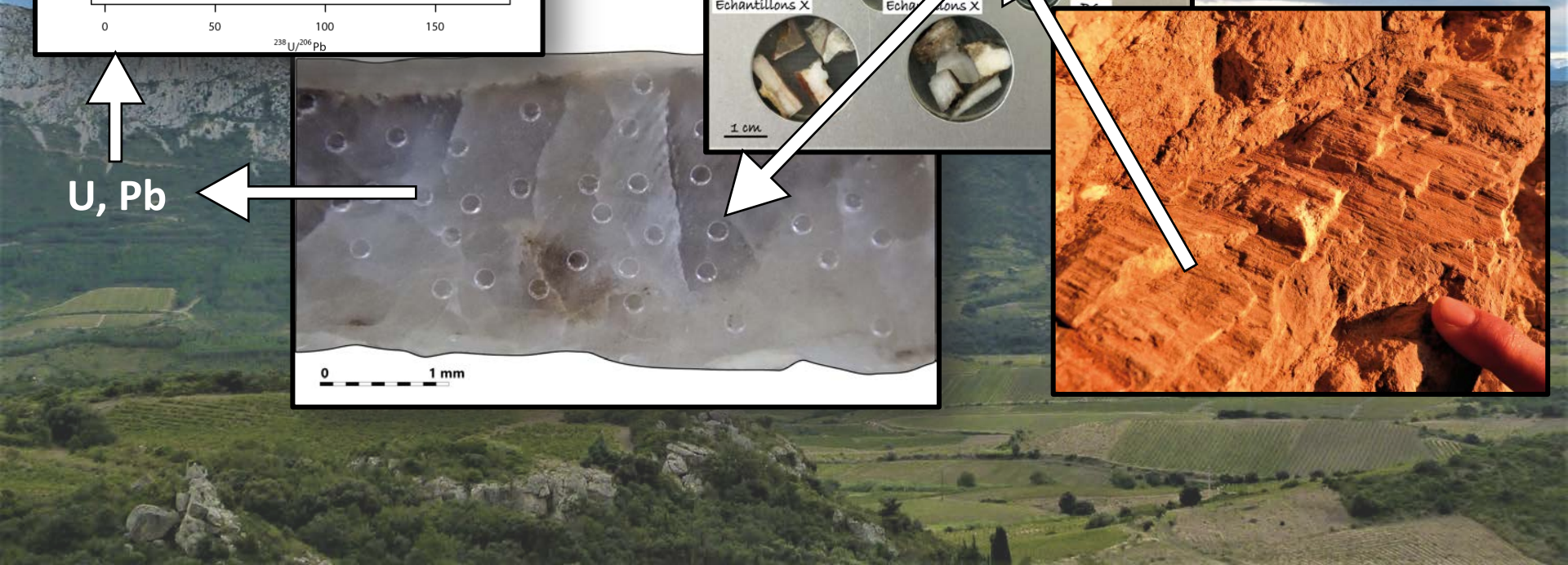
Age de la déformation

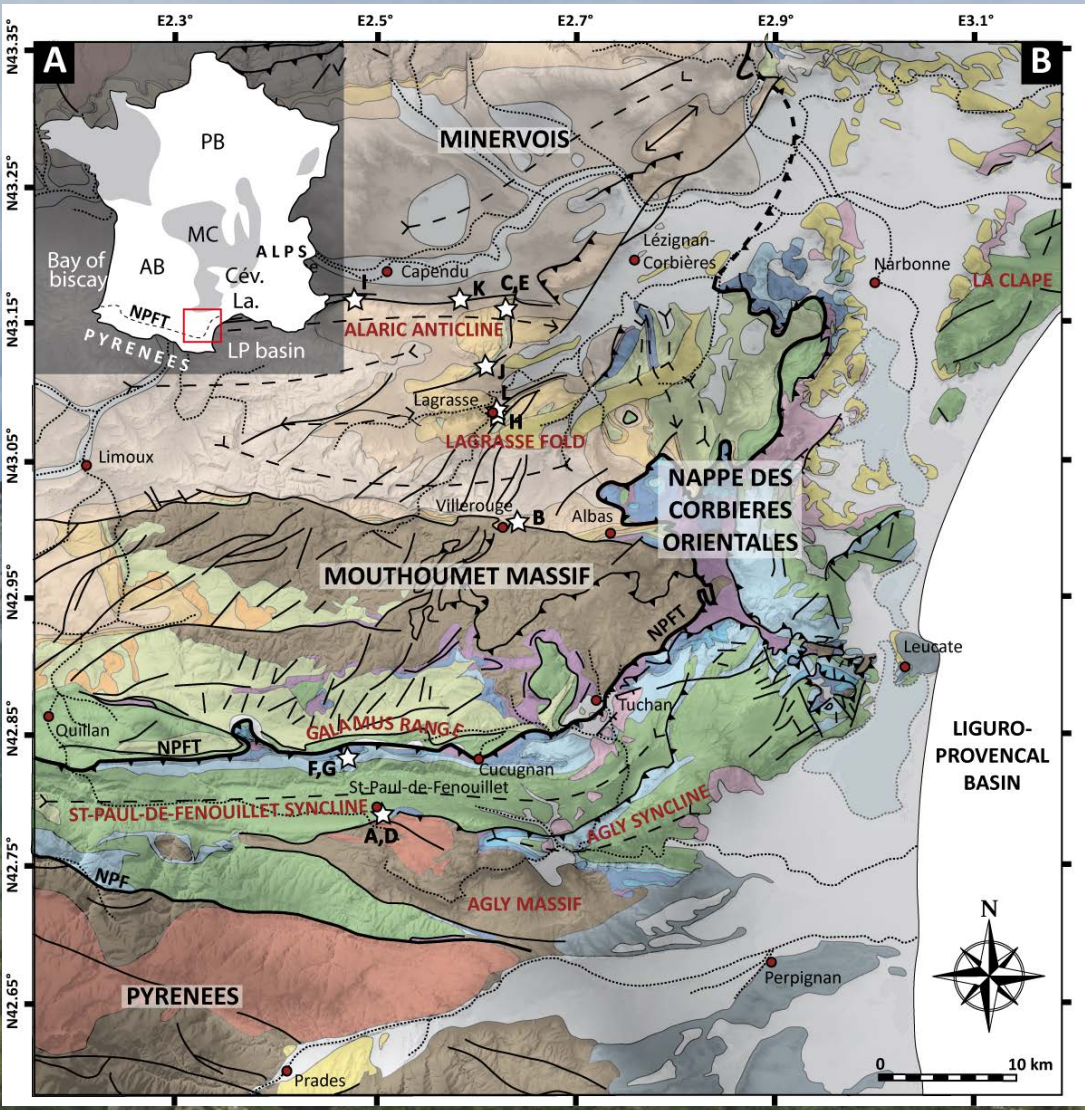


La datation U-Pb sur calcite de faille

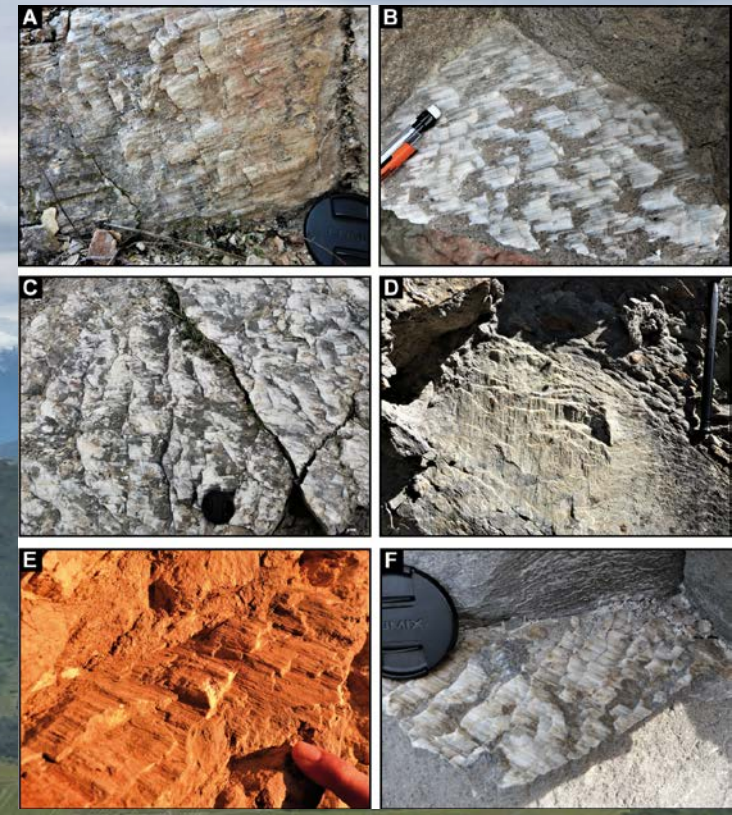


U, Pb

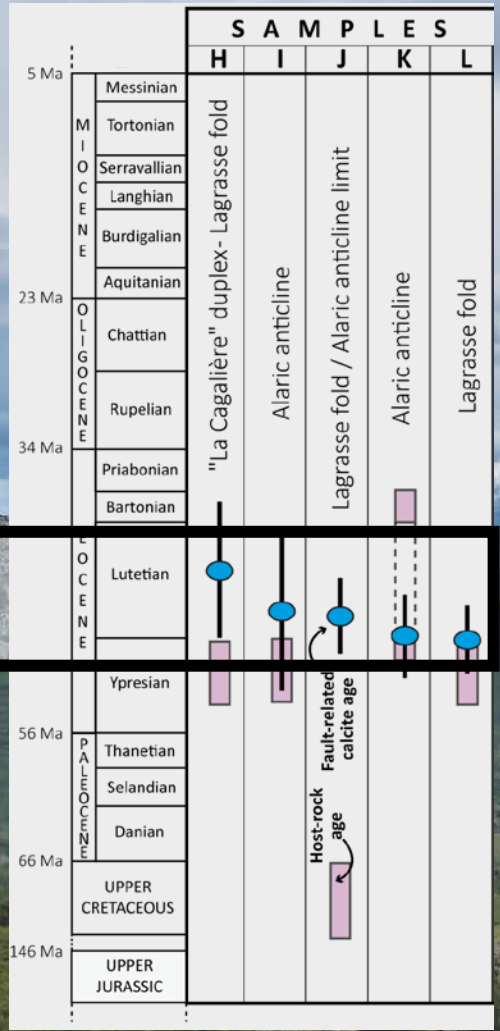




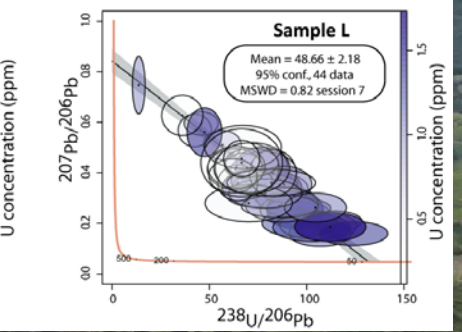
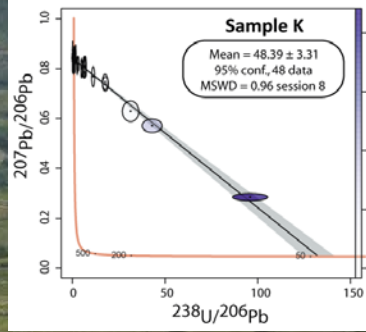
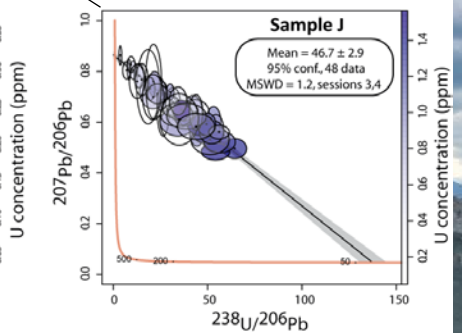
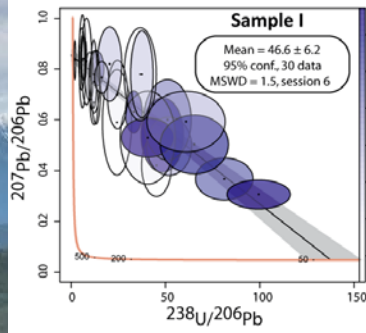
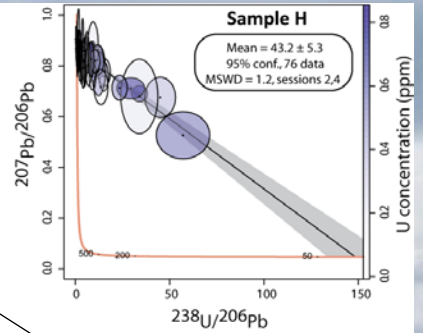
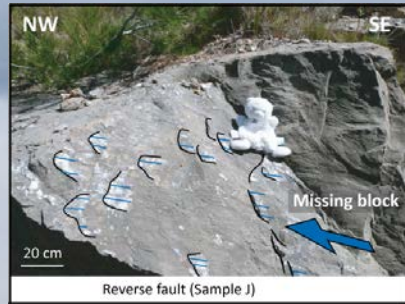
Parizot et al. 2021



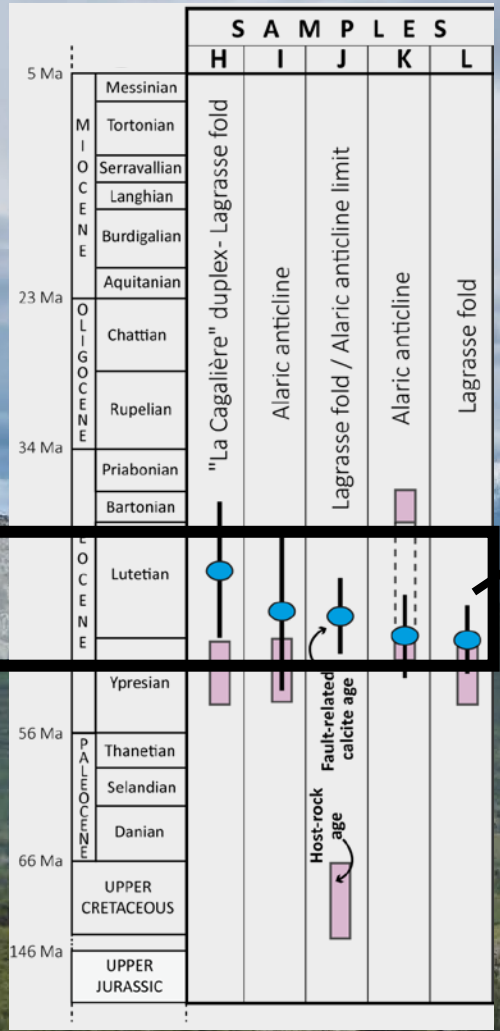
Résultats



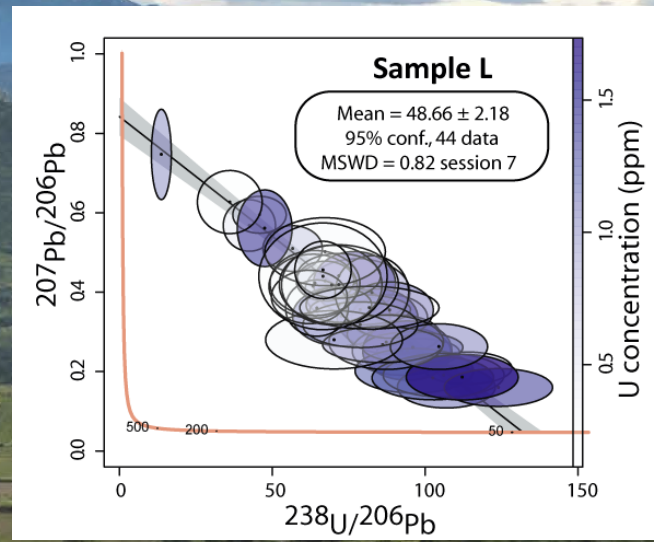
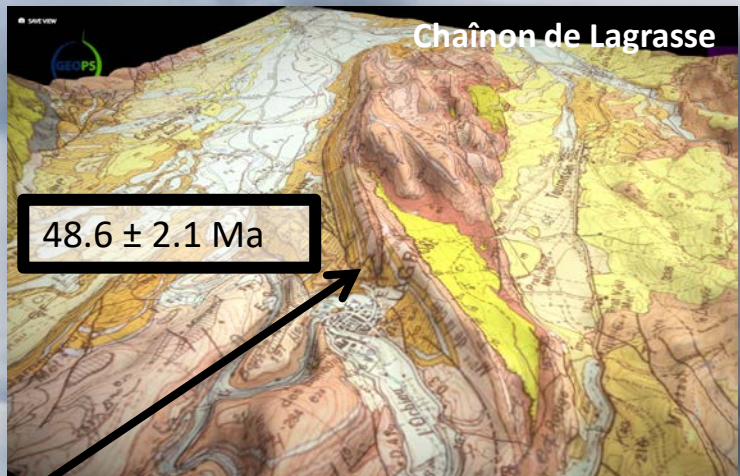
43.2 ± 5.3 Ma
48.4 ± 3.3 Ma



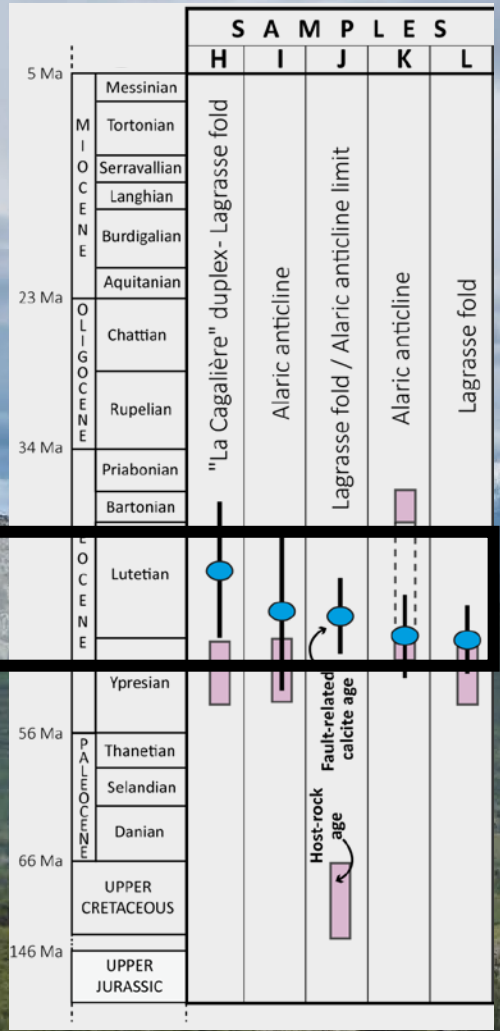
Résultats



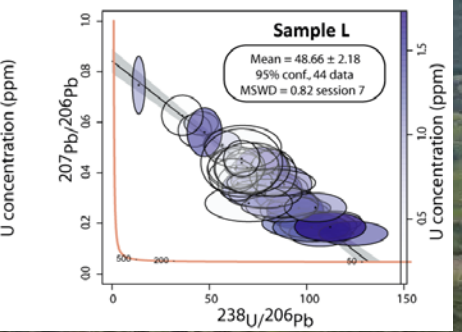
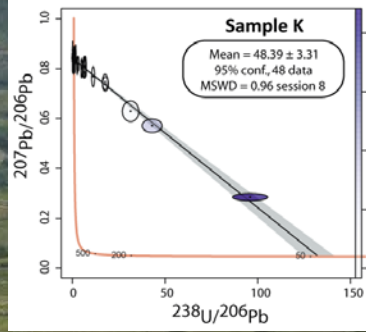
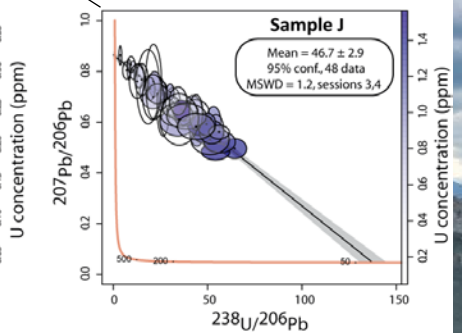
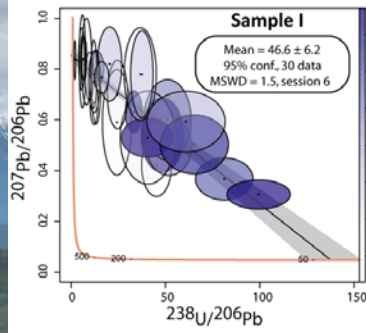
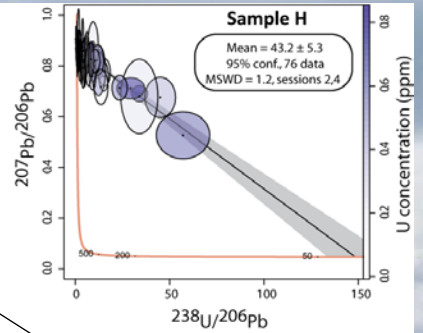
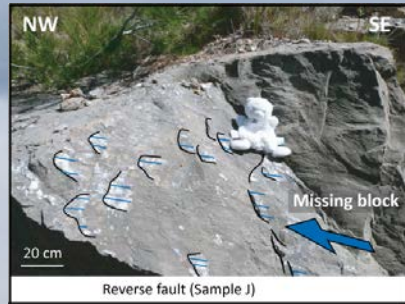
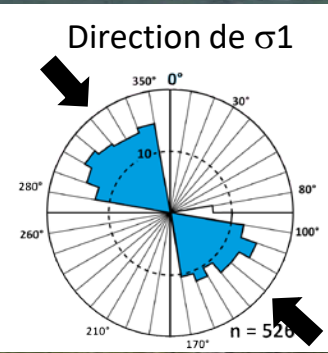
43.2 ± 5.3 Ma
48.6 ± 2.1 Ma



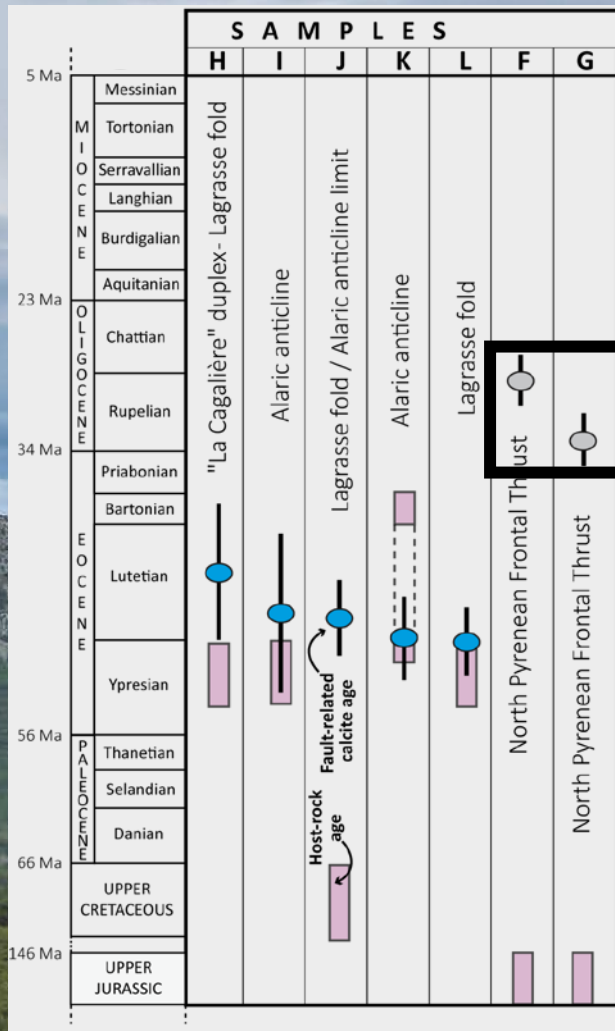
Résultats



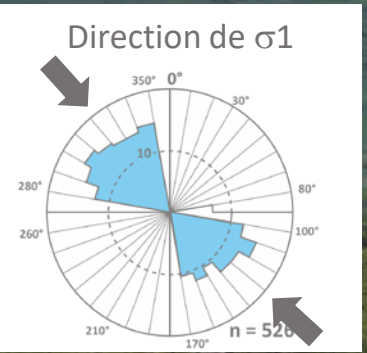
43.2 ± 5.3 Ma
 48.4 ± 3.3 Ma



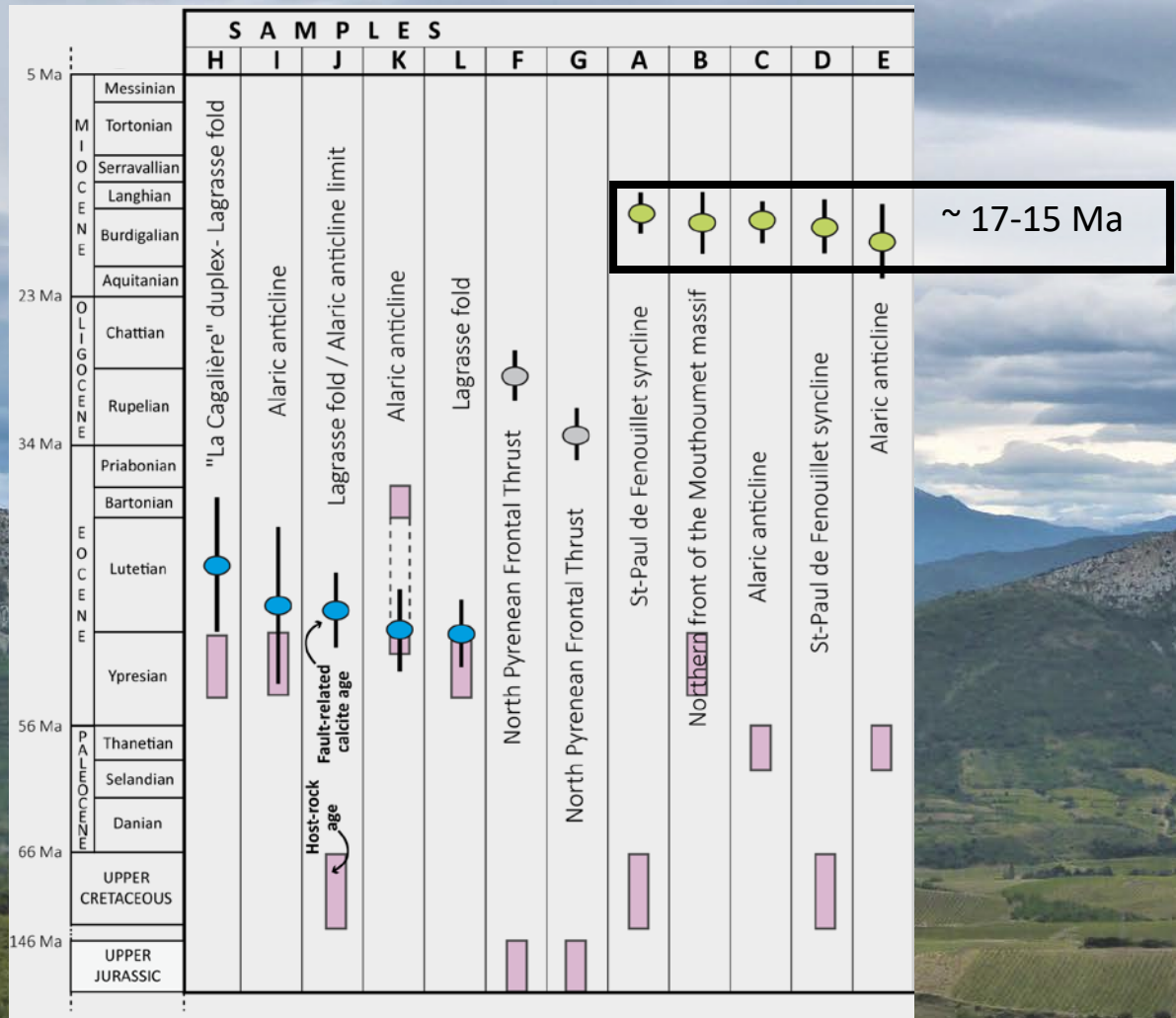
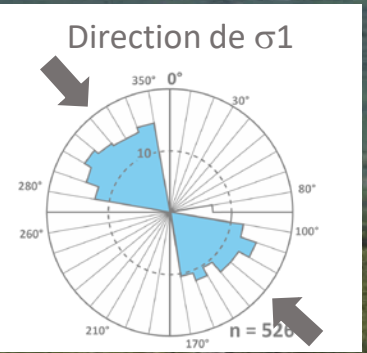
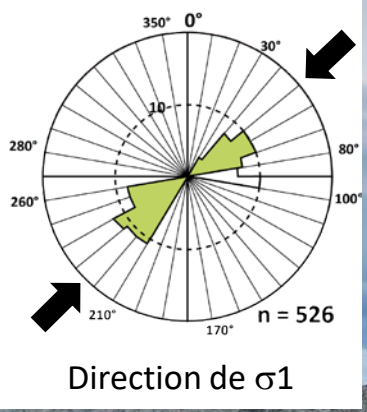
Résultats



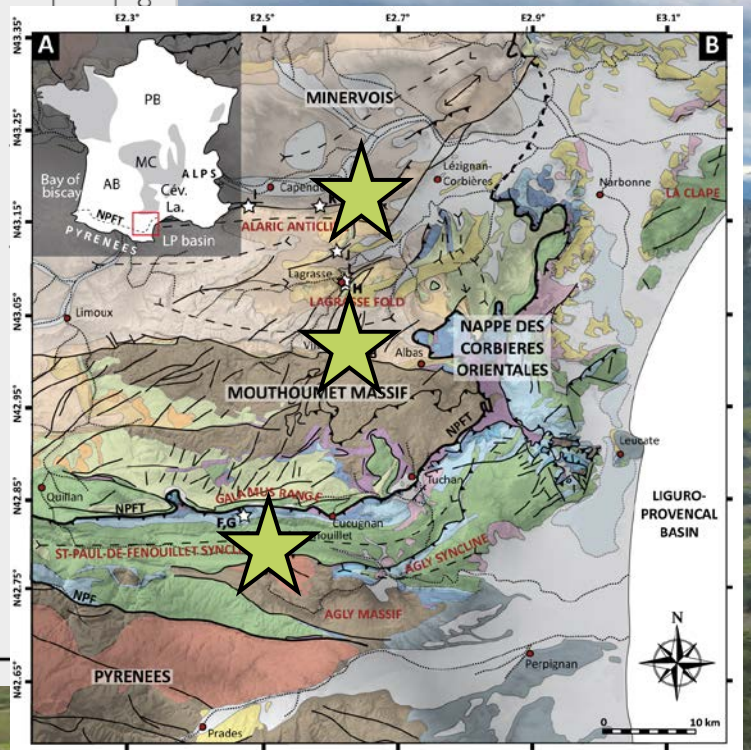
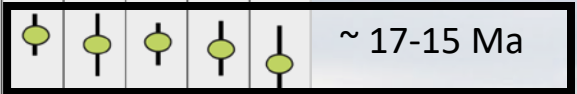
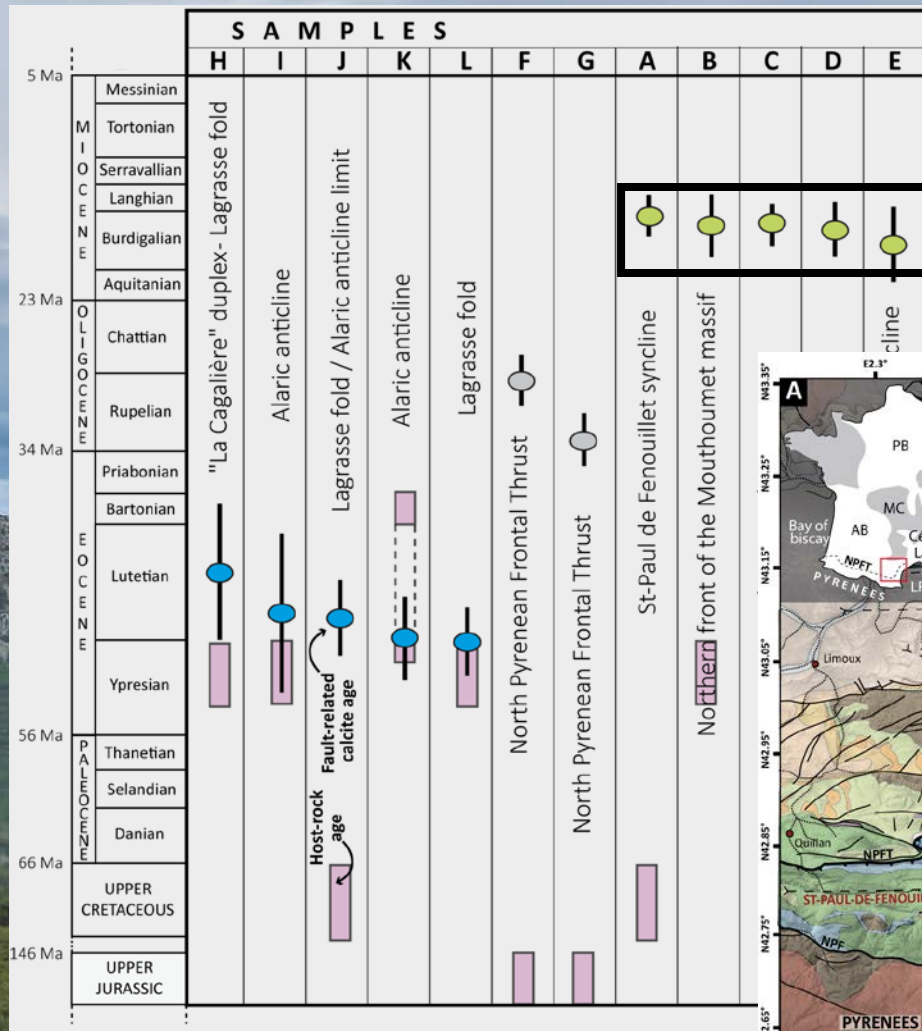
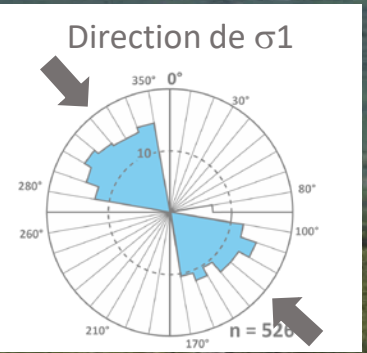
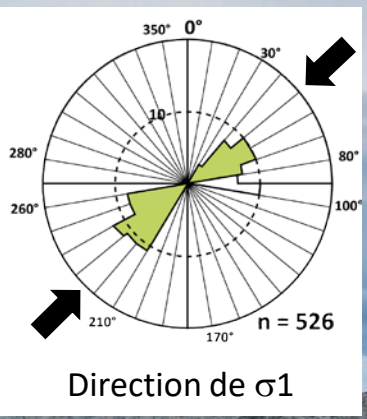
28.1 ± 2.2 Ma
32.8 ± 2.0 Ma



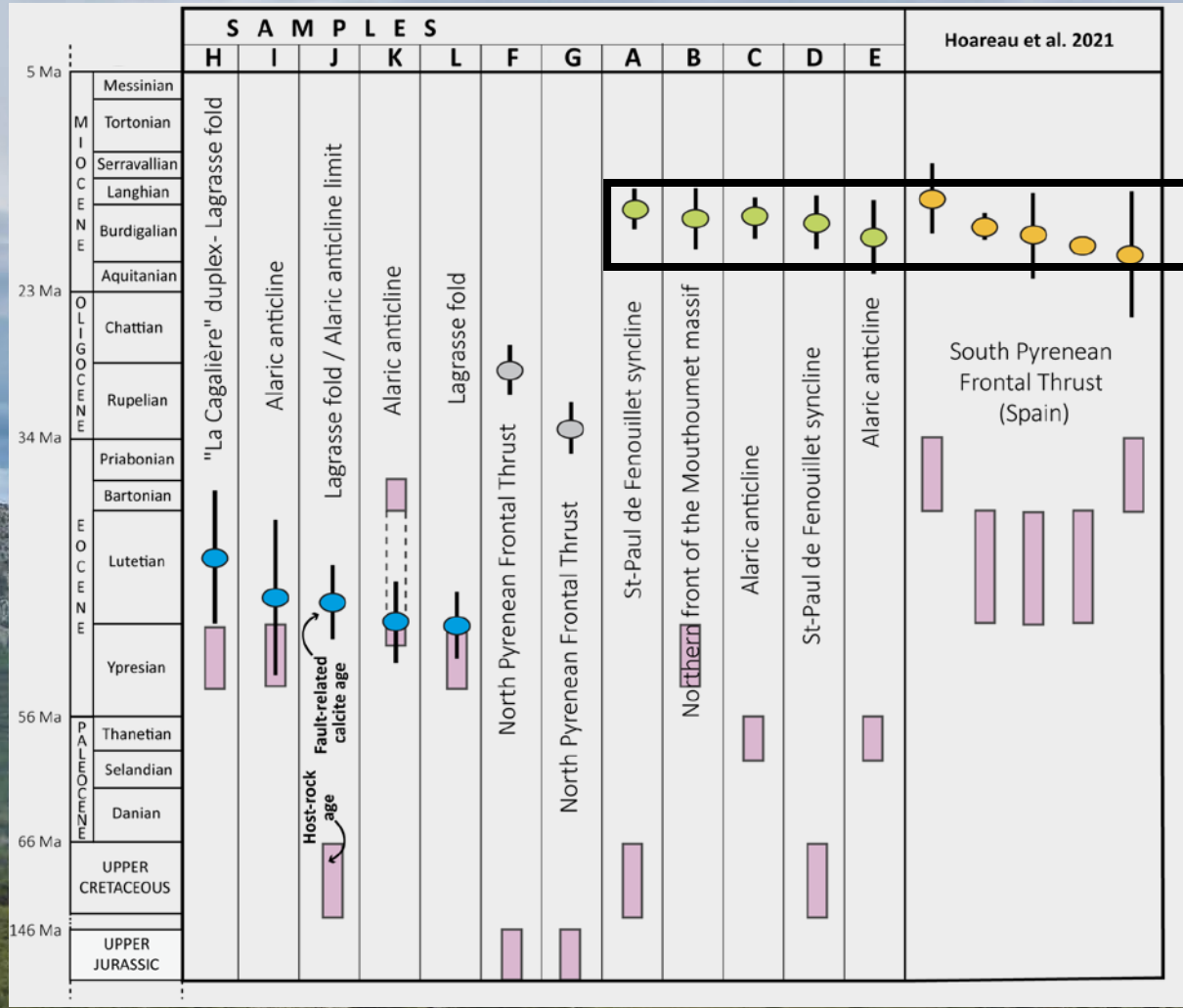
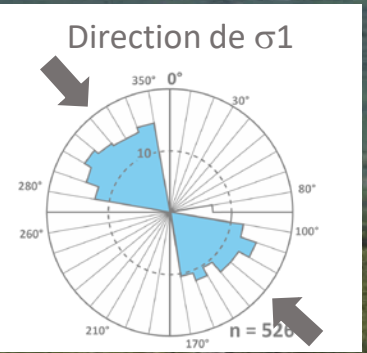
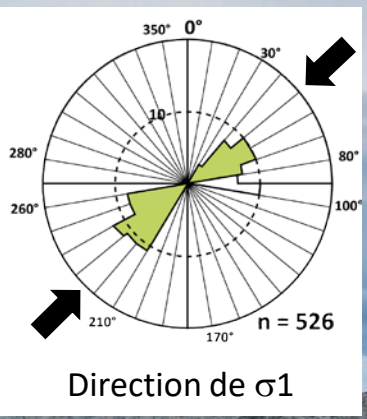
Résultats



Résultats

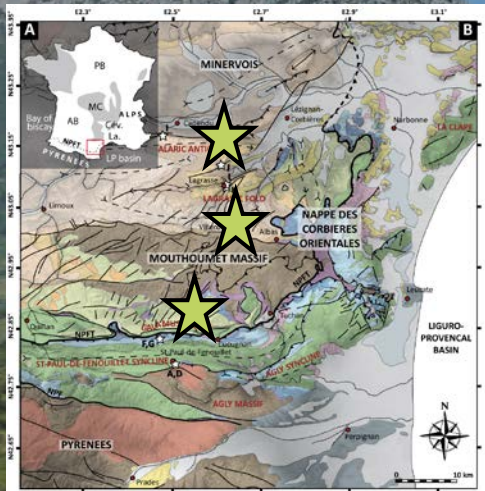
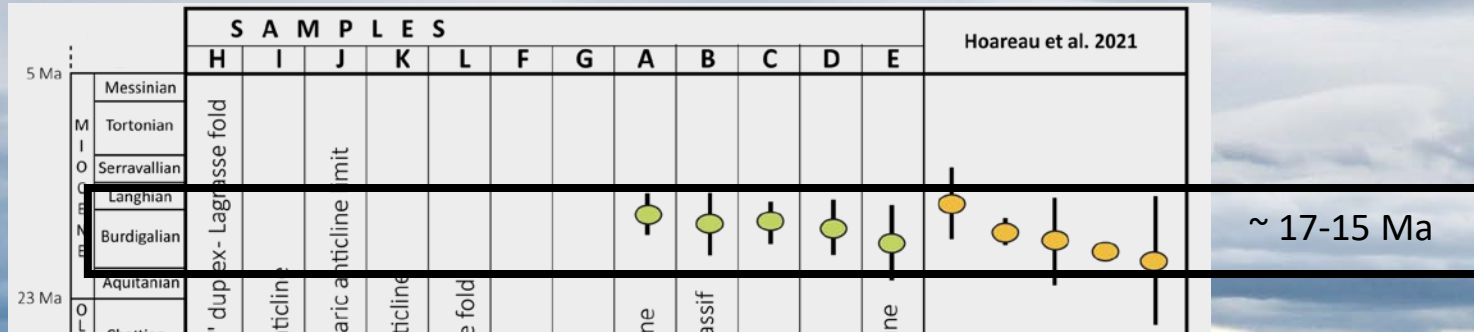
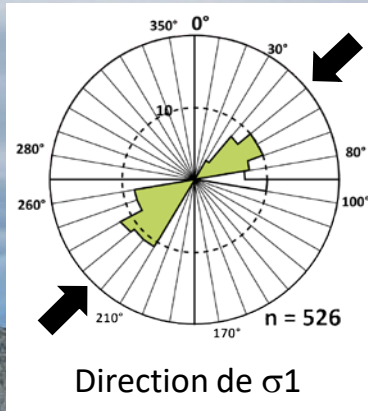


Résultats



~ 17-15 Ma

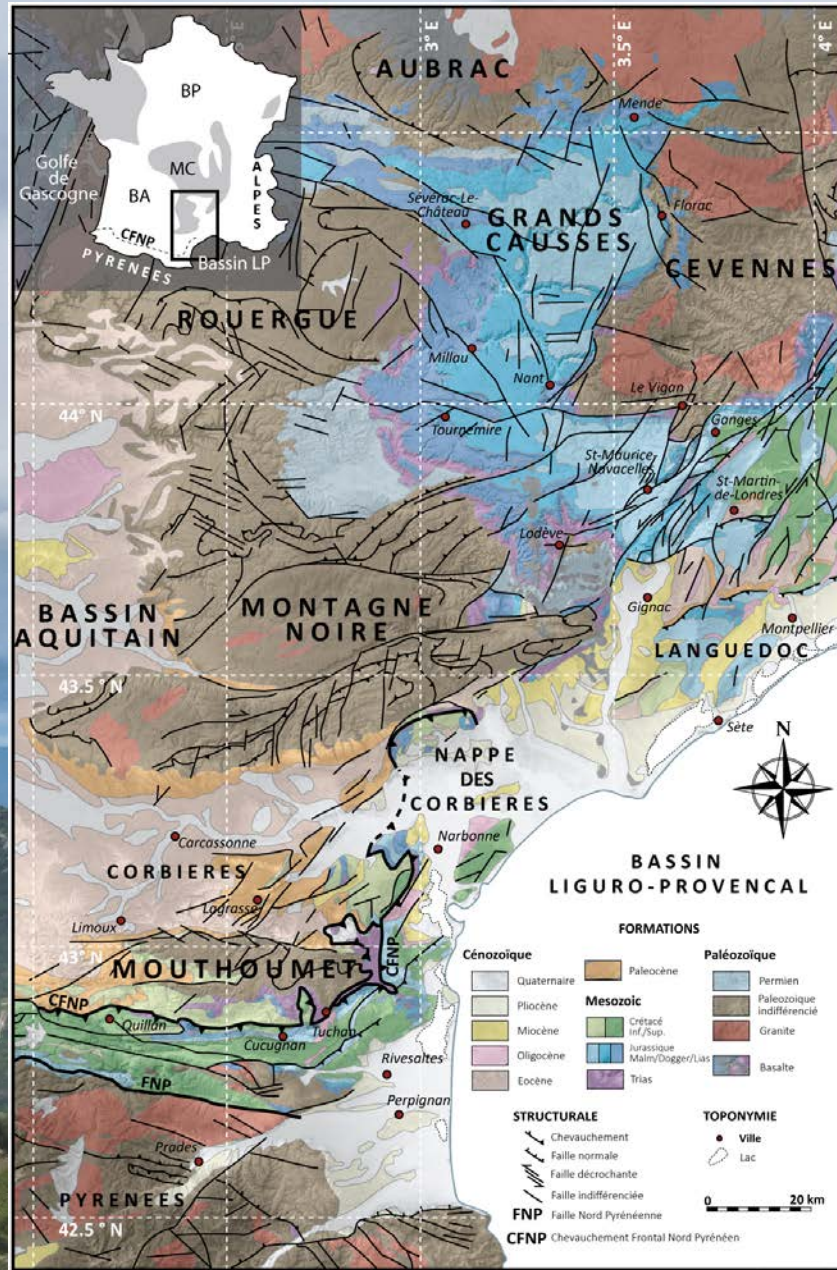
Conclusion



Une nouvelle phase de déformation « tardi-pyrénéenne » :

- Compressive (NE-SW dans les Corbières)
- Régionale (versants Nord et Sud)
- Ponctuelle (17-15 Ma)
- Au cours de l'histoire traditionnellement considérée comme « post-orogénique » de la chaîne
- En réponse au couplage fort Afrique/Europe
- Une explication possible aux soulèvements et/ou à l'exhumation tardive ?





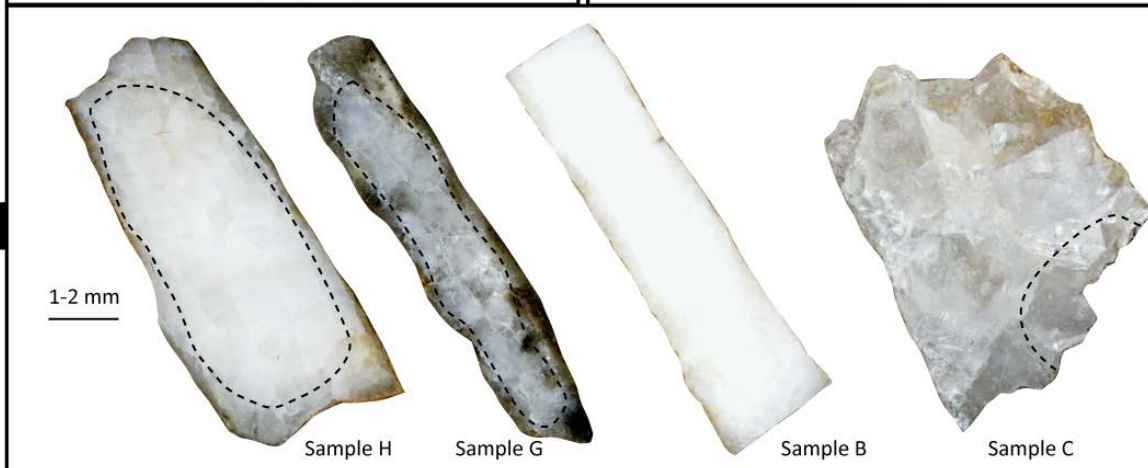


Dextral fault (Sample D)

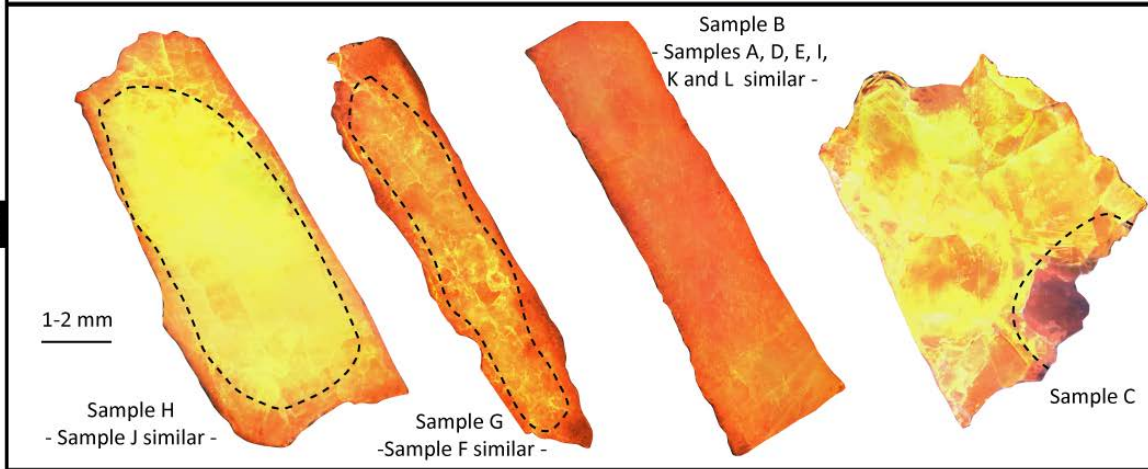


Reverse fault (Sample J)

A



B



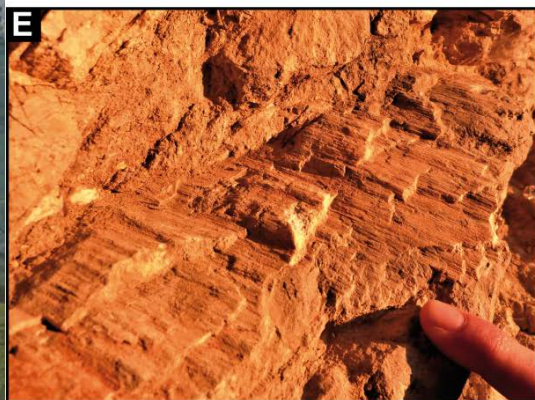
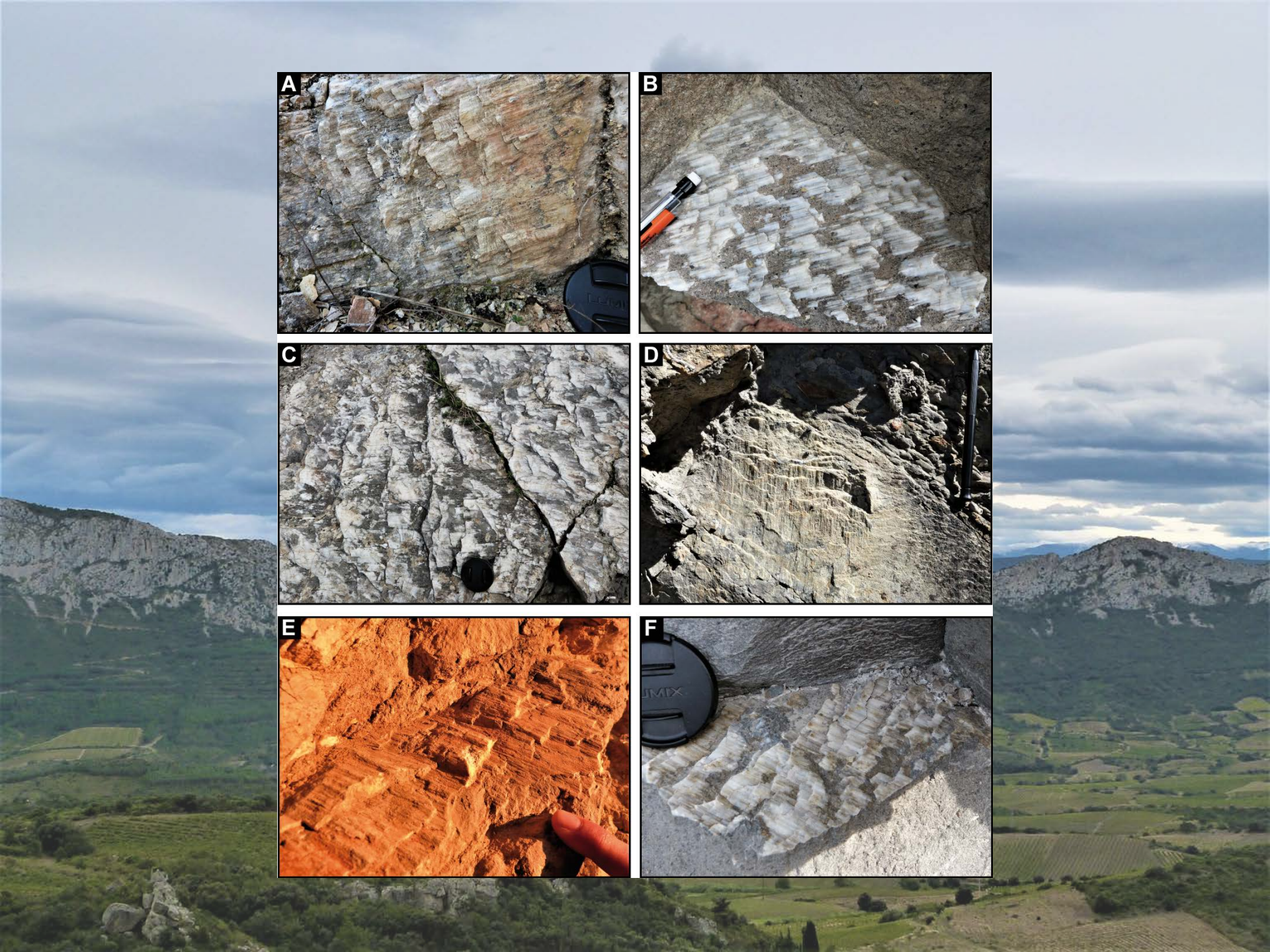
C

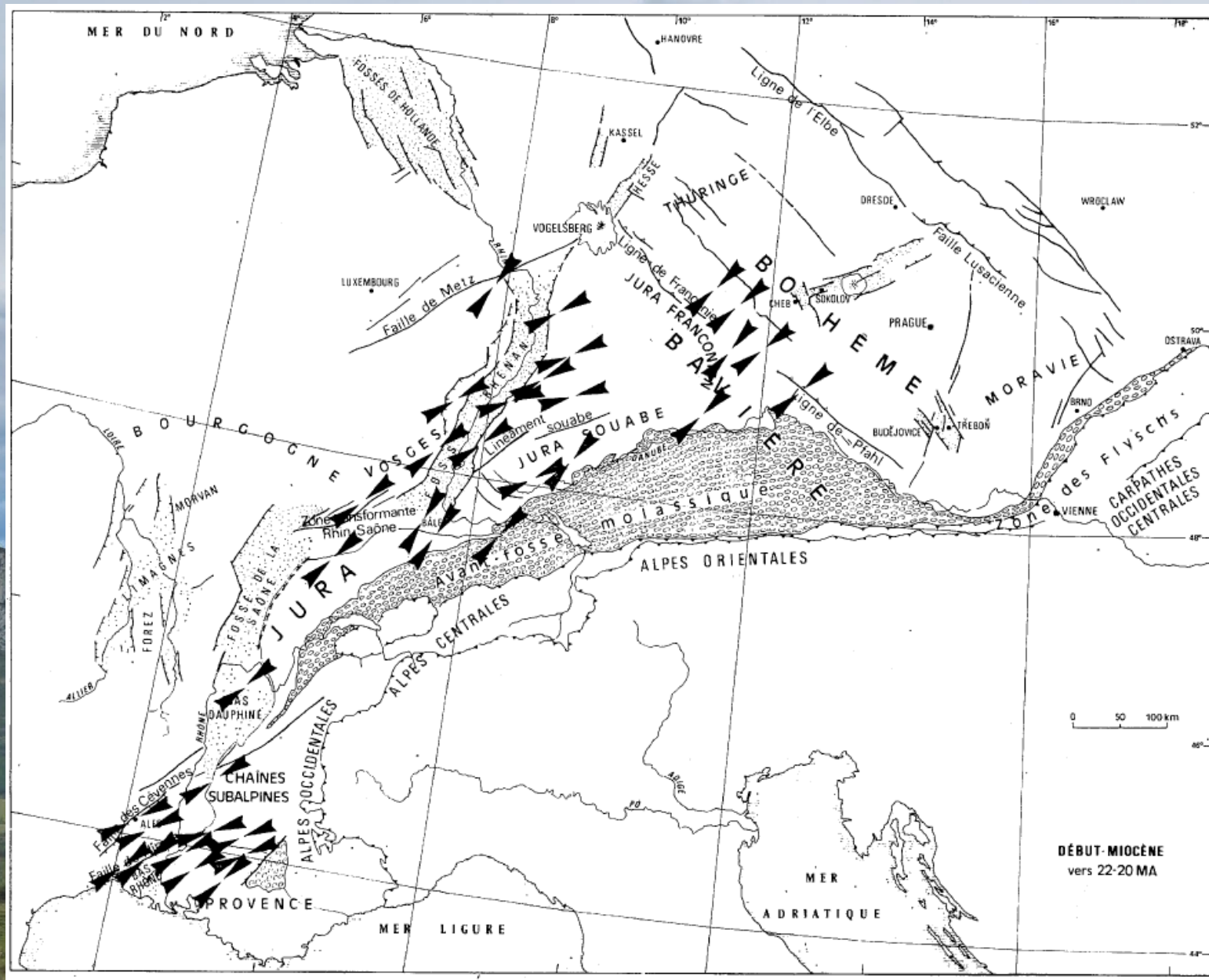
Sample H
- Sample J similar -

Sample G
- Sample F similar -

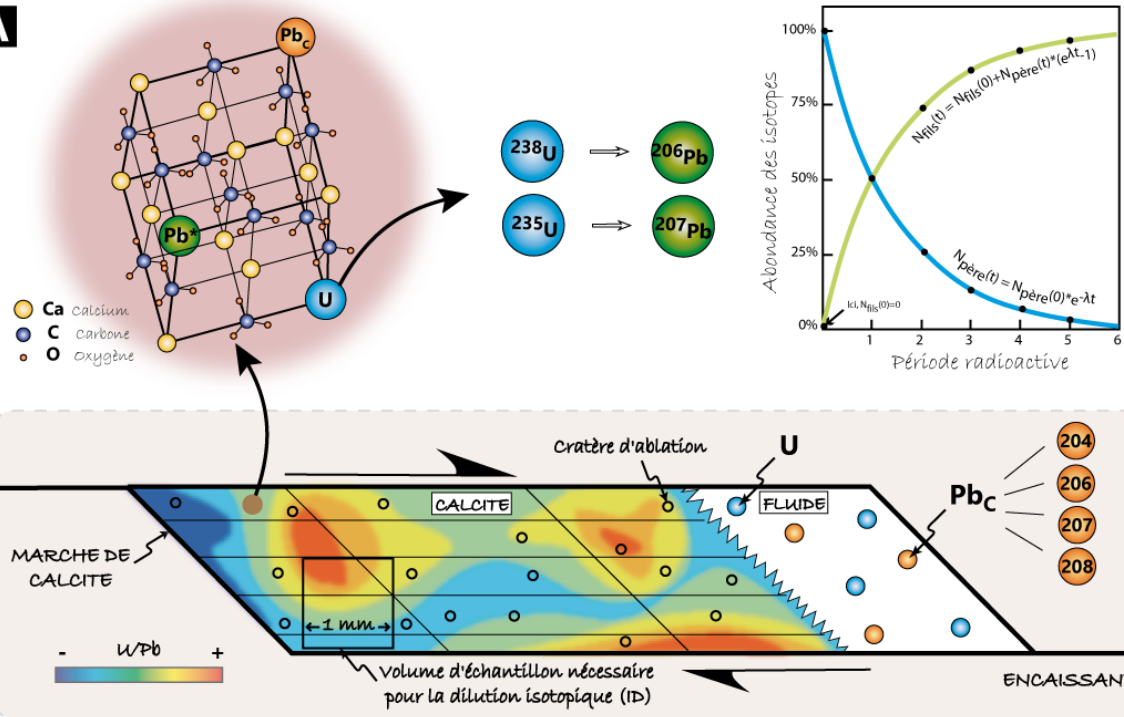
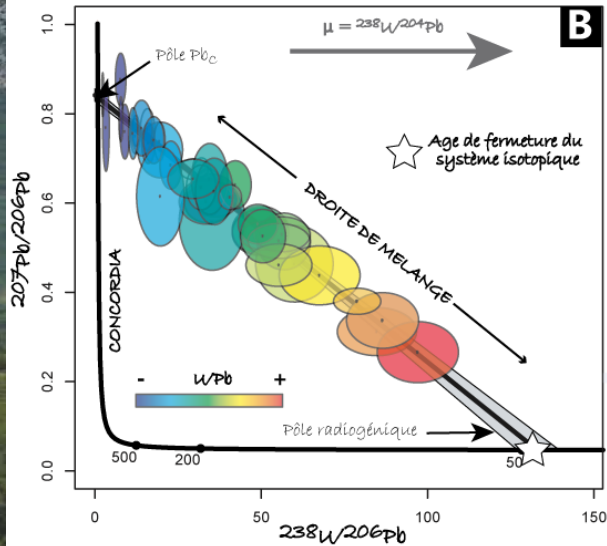
Sample B
- Samples A, D, E, I,
K and L similar -

Sample C





Bergerat et al. 1987

A**B****C**